

# zIIP@NEXXAR

DB2 GSE meeting Belgium

September 25, 2008

*Prepared by,*

Eddy Tiels

DBA

Competence Partners

Email: [eddy.tiels@cp.be](mailto:eddy.tiels@cp.be)

# Agenda

- Environment
- How did we justify the zIIP
- Implementation
- Results

# Environment

- Java J2EE application
- WebSphere Application Server on Linux
- z/VM to run Linux partitions
- PKI
- DB2 Connect, JAVA Universal driver
- z/OS.e
- DB2 for z/OS

# How did we justify the Ziip

- Preliminary calculations based on IBM's numbers
- Created XLS numbers and graph to estimate the return on investment

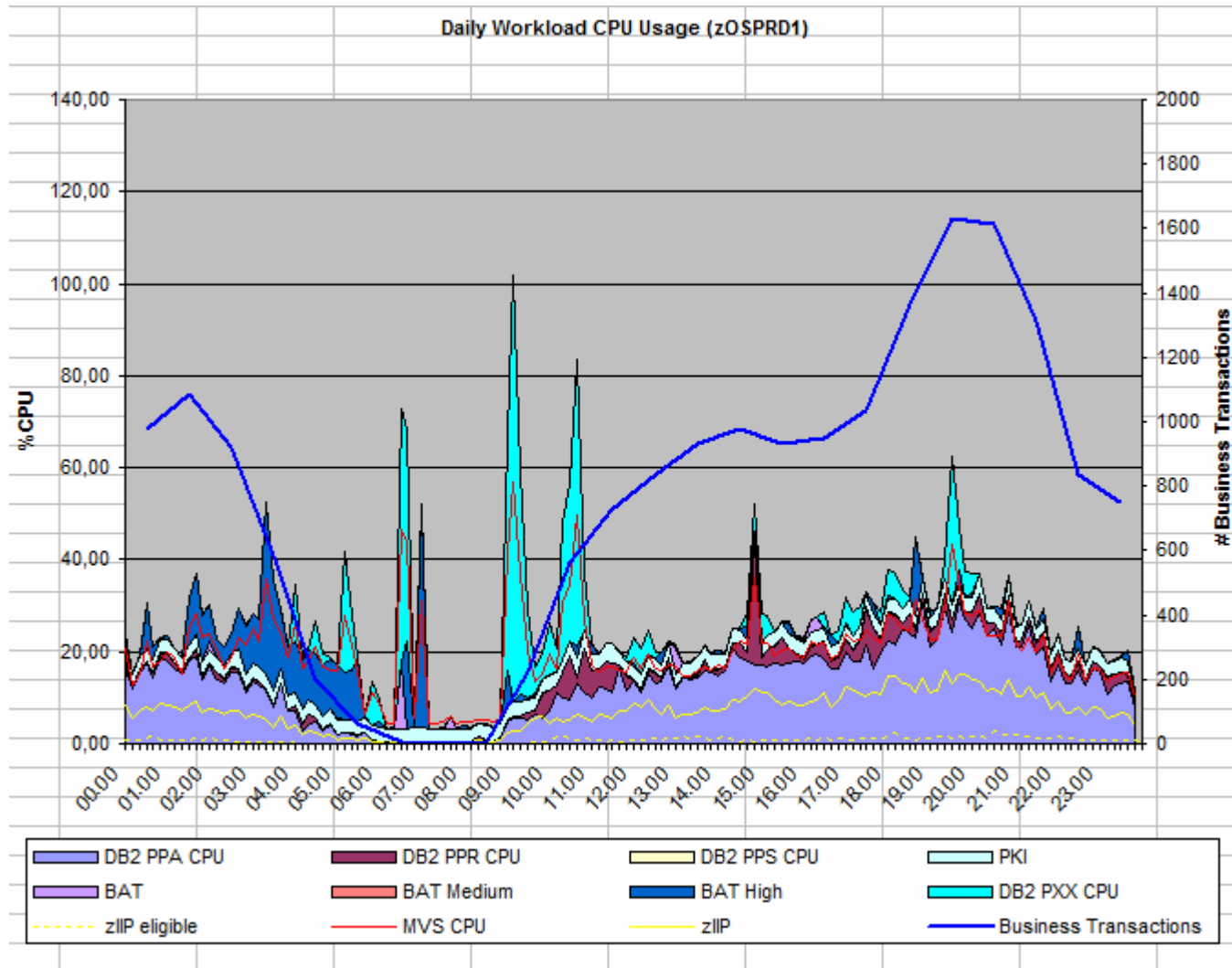
# Implementation

- Add PTF's to z/OS.e 1.7
- Add PTF's for DB2 8
- Add PTF's for PM monitoring tools
- Add PROJECTCPU in parmlib
- Verify and adjust estimated figures with the projected CPU numbers
- Install the zIIP in test for a month

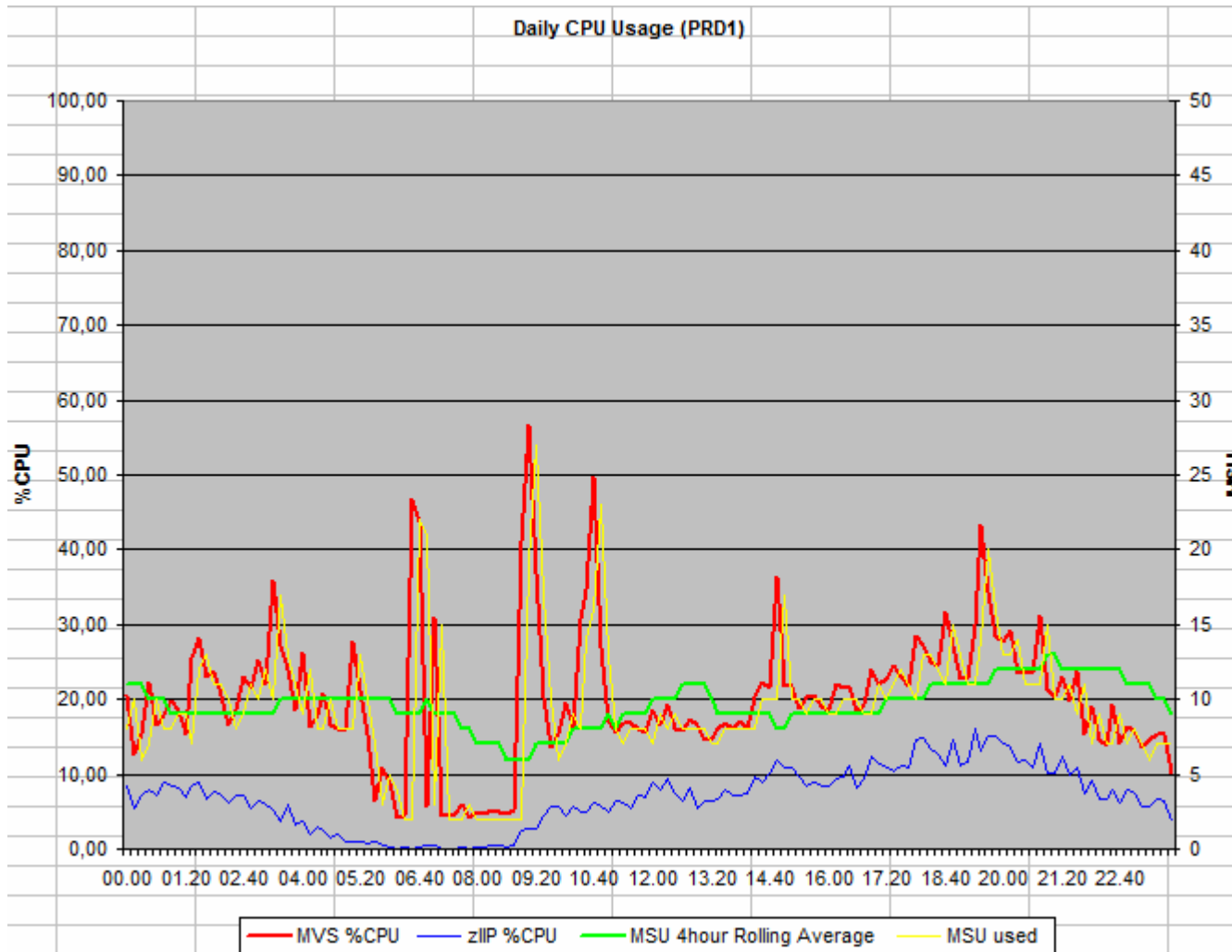
# Results

- CPU workload
- MSU usage
- DB2 performance numbers

# CPU workload



# MSU usage



# DB2 performance numbers (1)

- Total

	Tot Class 1 in sec				Tot Class 2 in sec		
	CP CPU	Eligible	IIP CPU	Tot	CP CPU	IIP CPU	Tot
PRMAUTH							
WZPPA	17085,11	616,07	19297,76	36382,87	10970,68	14704,71	25675,39
WZPPI	228,85	9,28	260,91	489,76	174,1092	154,0468	328,1561
WZPPR	1877,09	52,10	1571,67	3448,76	1503,632	1565,848	3069,48
WZPPS	132,08	3,81	139,38	271,46	98,03025	85,2345	183,2648
	19323,14	681,26	21269,72	40592,85	12746,46	16509,84	29256,29

# DB2 performance numbers (2)

- Percentage

	Class 1		
PRIMAUTH	% CP CPU	% IIP CPU	% Eligible
WZPPA	46,96	53,04	1,69
WZPPI	46,73	53,27	1,89
WZPPR	54,43	45,57	1,51
WZPPS	48,66	51,34	1,40